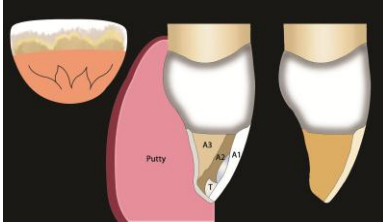


Composite Mirroring:

Creating a Seamless, Undetectable Restoration



The art and science of direct composite restorations require the dentist to combine all the principles of esthetics and function in order to achieve long-term success. Subtle but essential steps will be discussed to **maximize esthetics and minimize sensitivity** when placing these **most conservative, least invasive, yet predictable restorations** to restore teeth to their original form and function. This presentation will

cover the basic physical properties of composites that will result in better clinical outcome in a Class I, II, III, IV, and V restoration. Step-by-step typodont and clinical cases will be shown for each Class of restoration using various manufactures' composites. Emphasis is placed on direct composites in the esthetic zone such that **every clinician can return to their offices and place seamless restorations** at a higher skill level.

Posterior Direct Bonded Restorations (*Morning*)

- Discussion of adhesive dentistry: material and techniques.
- Evaluation of the various types of composite materials.
- The proper armamentarium and material selection.
- Step-by-step demonstration of Class I & Class II composite restorations.
- Is there any value to tints and opaques?



Anterior Direct Bonded Restorations (*Afternoon*)

- Discussion of the best composite systems to use for anterior direct bonding.
- Step-by-step explanation of how to restore Class III, IV, and V using our adhesive dentistry techniques.
- Preparation design to create an invisible restoration.
- "Layering" technique to build in polychromicity and translucencies using a PVS matrix.
- Comprehensive evaluation of contour and color and their effects on final esthetics for anterior restorations.

Learn the essential steps to **maximize esthetics** while **minimizing post-operative sensitivity** with composites. Acquire composite skills that are more likely to **get the patient to say "Yes!"** to treatment.

This **full (or half) day lecture** may be combined with a **hands-on workshop** to allow clinicians to apply learned techniques in a small, intimate setting.



Practical ~ Attainable ~ Doable

Brian P. LeSage, DDS, FAACD

Beverly Hills Institute of Dental Esthetics



BrianLeSage436@yahoo.com • (877) 90210 DDS • www.BHIDE.info